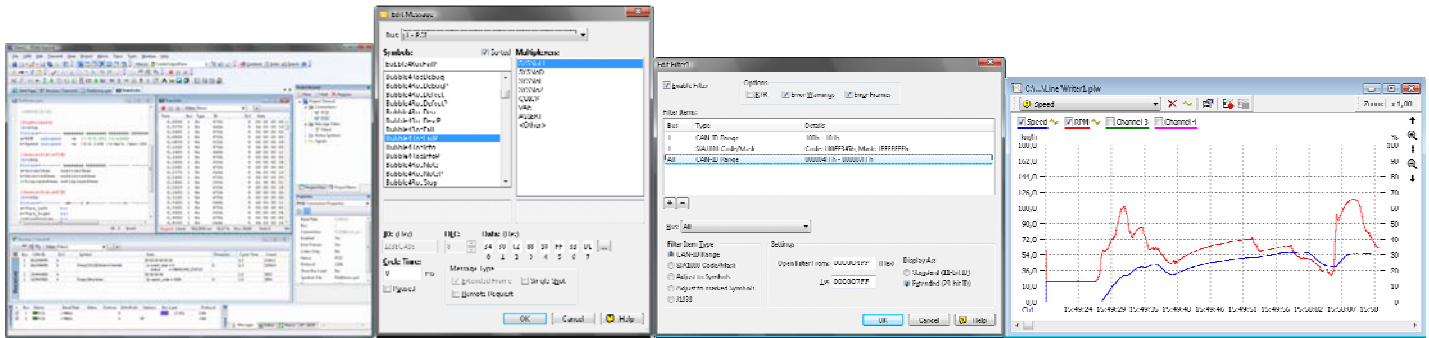


PCAN-EXPLORER 5

Part No: MPPK-CAN-Analyzer-EXPLO5

Comprehensive CAN Monitor for Windows®

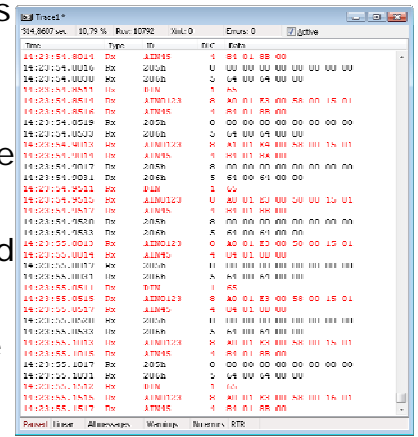


PCAN-Explorer is a universal tool for monitoring data traffic on a CAN network. For easy and clear allocation of the individual messages, these can be identified as so-called symbols. The integrated VBScript support allows the creation of macros to automate complex tasks. The integrated data logger means that the data traffic of a bus can be recorded, analyzed, and stored. PCAN-Explorer is designed as automation server and can therefore be remote controlled through scripts.

Features

- All files and elements can be saved in projects and administered using the project browser
- The new start page allows fast access to the most recently opened projects or files
- Simultaneous connections with multiple networks/CAN interfaces of the same hardware type
- Connection window with an overview of all connections, complete with status, error counters, bus load, etc.
- All parameters of all elements in the user interface can be examined using a Property Window and edited if necessary.
- Multiple flexible filters can be configured and, for example, assigned to the send/receive window or the various different tracers
- Tabs to switch between the different windows
- Flexible arrangement of the user interface using the dockable windows
- User-defined column display and arrangement in send/receive window
- J1939 support with the relevant add-in
- Display of received messages showing the ID, length, data bytes, number of messages received and receiving interval
- Simultaneous hexadecimal and symbolic representation of the details
- Display of remote frames, status reports of the CAN controller and, as option, CAN-bus error frames also
- Logging of time-outs
- Sending of messages at fixed intervals of time, manually or as reply to remote frames

- Messages can be created as send lists, stored and loaded as desired, in order to e. g. emulate CAN nodes
- Periodical sending with up to 1 ms precision
- In the Item Browser CAN networks, symbols, macros etc. are represented clearly and in a structured manner
- Easy creation of symbol files and macros using the integrated text editor with syntax highlighting
- User-friendly real-time monitoring of several signals via the watch window
- Extensive improvements to user prompting and user interface
- Simple integration of external tools
- Integration of Add-Ins to upgrade functionality



Properties of the integrated, configurable PCAN-Explorer data logger:

- Operation of multiple tracers at the same time
- Variable buffer size
- Optional linear buffer or circular buffer
- Representation of the logged messages with time stamp, type, ID, length and data bytes
- Logging of errors that have occurred is possible
- Flexible storage possibility for the logged data in text form for importing into Excel or similar
- Filtering of the messages for logging through symbol definitions
- Subsequent examination of the logged data in the buffer via different symbol files

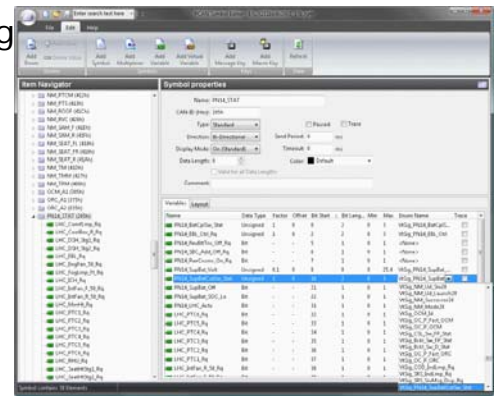
Function upgrade of the PCAN-Explorer with the integrated VBScript language

- Creation of macros in VBScript with the integrated text editor
- Access with macros and scripts to almost all program elements via the PCAN-Explorer object model
- Ideal for creating test tools to implement or develop CAN systems
- Examples: sending of e-mails when a temperature is exceeded, starting of a test tool when a particular message is received, opening of an Excel sheet when an event occurs and saving of data in the individual cells
- Assignment of function keys with individual send messages or macros
- VBS scripts run in the background even without the PCAN-Explorer interface

Properties of the independent Symbol Editor:

- The graphic representation of symbols and the automatic error detection allow easy creation of symbol files
- Symbolic representation of CAN messages through the assigning of alphanumeric names

- Bit-exact division of the data into variables for assigning name, data type, list of values, scaling, Offset etc.
- Supports data processing in accordance with IEEE 754 as well as in the Intel and Motorola format
- The Item Navigator and the search function allow targeted access to all elements of the symbol files
- Importing of CANdb files into the symbol data format and vice versa (requires the PCAN-Explorer Add-In CANdb Import)



Scope of supply

- PCAN-Explorer installation CD including PCAN-Explorer Line Writer Add-in (in English)
- Documentation in HTML help format

System requirements

Windows® 7/Vista/XP (32/64Bit)
at least 512 MB RAM - from 1 GHz CPU

MPPK-CAN-Analyzer-EXPLO5 (IPES-005028)

